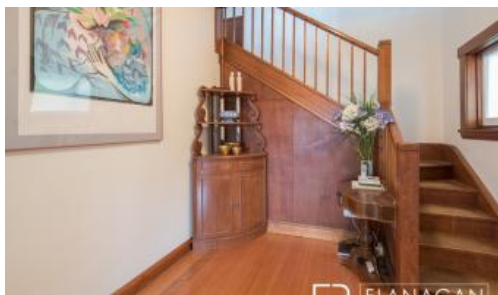


Sold

## 8 Bain Tce, Trevallyn



### Townhouse In Trevallyn

This beautiful townhouse has the wow factor and offers a high level of comfort and convenience in the heart of Trevallyn.

On entering the home, you will discover this fully restored 1947 gem combines a familiar old-world ambience, with an easy merging of contemporary design. The property has a unique floorplan with all living areas downstairs, and the three bedrooms and a luxurious bathroom located upstairs.

The open plan living and dining room is a beautiful space and flows around to an impressively renovated kitchen and powder room. Lovely features abound in this downstairs area, from the open fireplace to the tri-fold glass doors leading out to a deck offering magnificent views and a wonderful space for entertaining.

Up the original timber staircase you will find a sunny landing and the expansive master bedroom, boasting floor to ceiling built-ins and a spectacular outlook of the city, river and beyond. The other two bedrooms are small (one with built-in) and would best suit as a nursery or study.

The laundry is underneath the house, accessed from the back deck and the established trees and hedged garden beds provide a lovely, leafy outlook and welcome privacy.

Only a short walk to town, the Trevallyn Village and Cataract Gorge this is a

3 1 1 432 m2

**Price** SOLD for \$435,000

**Property Type** Residential

**Property ID** 257

**Land Area** 432 m2

**Floor Area** 136 m2

#### Agent Details

Rae Smith - 0455 445 300

#### Office Details

Launceston

108A Tamar Street Launceston TAS

7250 Australia

0408 139 862



property not to be missed so call Rae today 0455 445 300 to find out more.

The above information provided has been furnished to us by the vendor/s. We have not verified whether or not that information is accurate and do not have any belief in one way or the other in its accuracy. We do not accept any responsibility to any person for its accuracy and do no more than pass it on. All interested parties should make and rely upon their own inquiries in order to determine whether or not this information is in fact accurate.